

Table of Contents

| | |
|---|----|
| Quick Start..... | 2 |
| Overview of the menu system | 2 |
| The Menu Bar | 2 |
| File..... | 3 |
| Project..... | 3 |
| Window..... | 4 |
| Settings..... | 4 |
| Help | 7 |
| The Main Toolbar | 9 |
| Create a New Project | 9 |
| Open Project | 9 |
| Import File to new SFP | 9 |
| Overview Pane | 9 |
| Making a New Single File Project (SFP)..... | 10 |
| Aliasing..... | 11 |
| Project information Data..... | 13 |
| Select data for analysis..... | 14 |
| Save and aliasing | 16 |
| History | 16 |
| Adding Files to SFP..... | 17 |
| Removing Files from SFP | 18 |

Quick Start

Making a SFP

Overview of the menu system

Upon entering **PatternFinder** (PF), you will be presented with the **PF** interface:

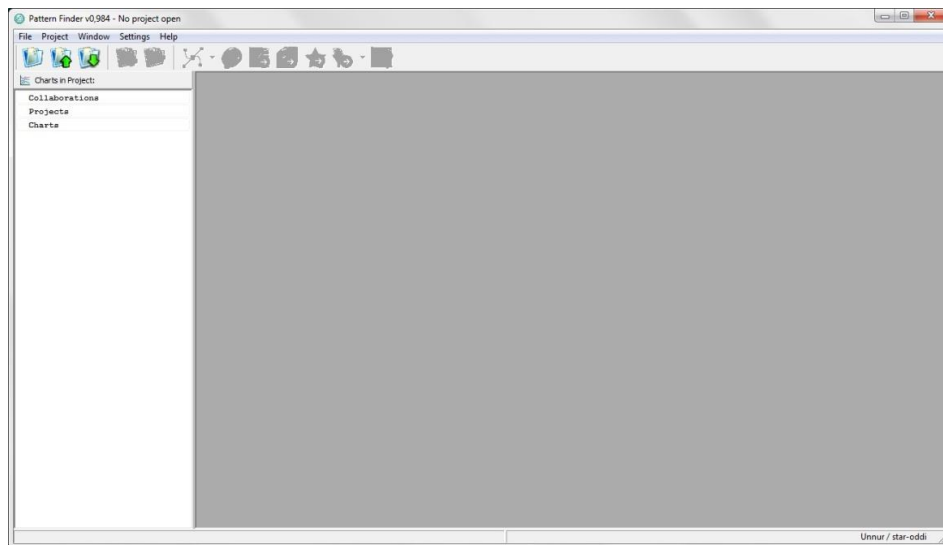


Figure 1 PF interface

The **PF** interface consists of:

The Menu Bar



Figure 2 Menu Bar

Options can be selected by pressing **Alt** and the underlined character key simultaneously, i.e., pressing **Alt** and **F** is equivalent to clicking **F**ile.

File

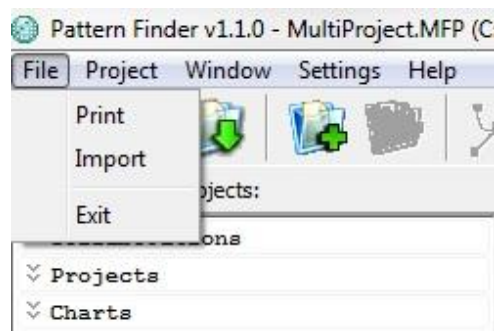


Figure 3 File menu

Print

Select **Print** to print out the chart which is activate on the screen.

Import

Select **Import** to import files into **PF**. See tutorial nr.6 for more information.

Exit

Select **Exit** to exit **PF**

Project

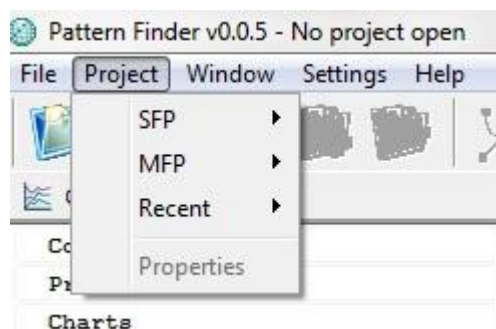


Figure 4 Project menu

SFP

Select **SFP** to create a new Single file project or open an already created one.

MFP

Select **MFP** to create a new Multiple file project or open an already created one.

Recent

Select **Recent** to open a recently opened or created project.

Window

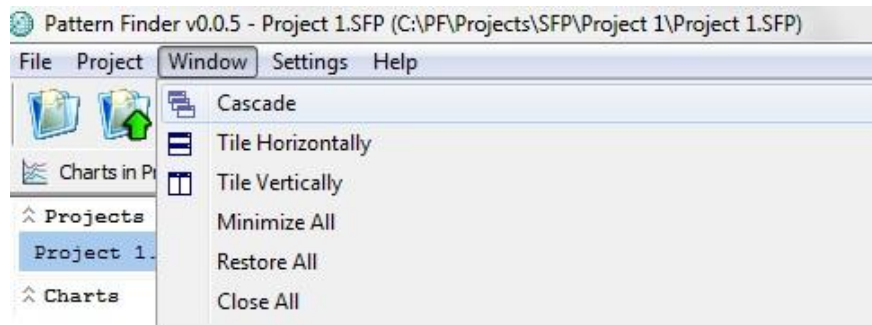


Figure 5 Window menu

The **Window** menu offers various options concerning the position of the chart windows.

Settings



Figure 6 Settings menu

Directory Settings

PatternFinder has a fixed directory structure that is created when installing the software. The user can define the location from where the DAT files, used for the projects, will be retrieved by selecting **Settings-Directory Settings** on the menu bar.

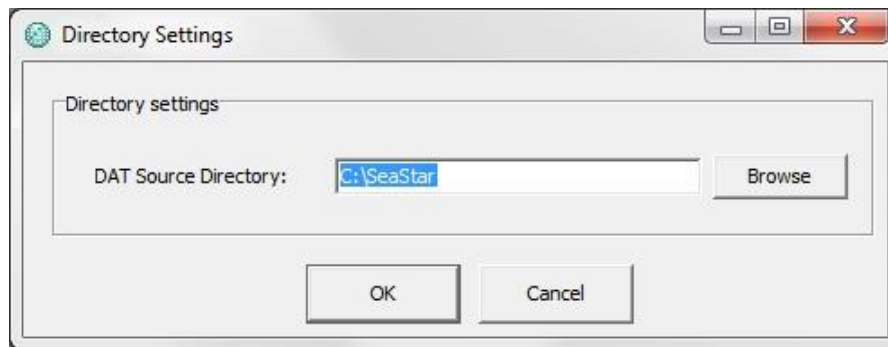


Figure 7 Directory Settings

Units

Under **Units**, the user can create new groups and units (see further instructions in chapter 3.1 in the User Manual).

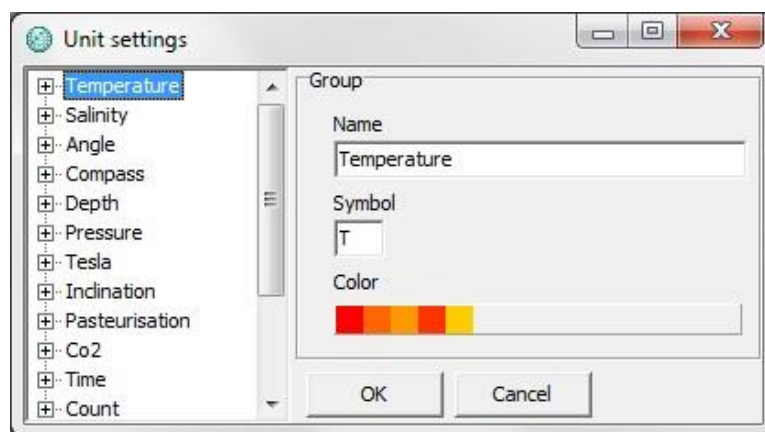


Figure 8 Unit settings

Use Alias

Select **Use Alias** to shift between the original file name and the alias.

You can also shift between the names by clicking F12 on the keyboard.

Preferences

Select **Preferences** and the following window appears:

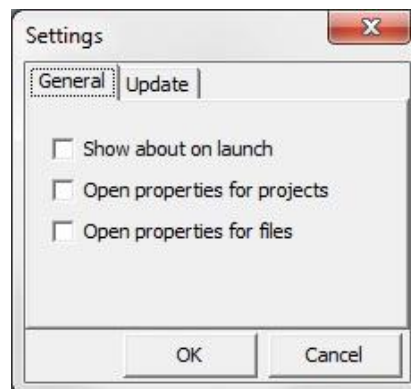


Figure 9 Preferences: General

General

Show about on launch: If checked the **About** window appears when opening the program.

Open properties for projects: If checked the **Project information** window appears when opening projects.

Open properties for files: If checked the **History** window appears when opening files.

Update

Select whether you want to update the program manually, every X number of days or every time PatternFinder is run.

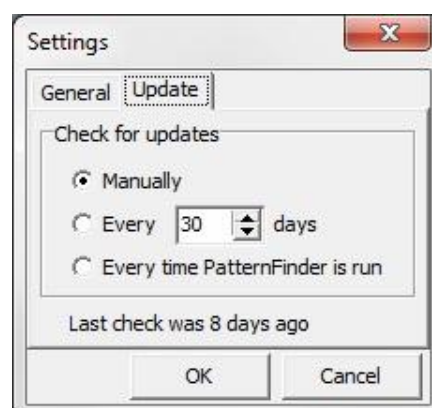


Figure 10 Preferences: Update

Help

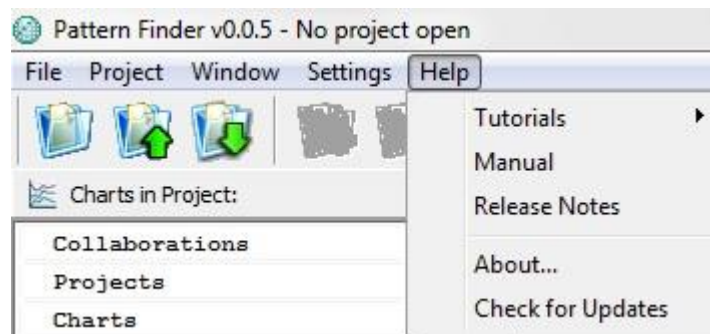


Figure 11 Help menu

Tutorials

Select **Tutorials** to view the **PF** tutorials in both PDF and AVI format. To be able to view PDF files Acrobat Reader or similar programs must be installed.

Manual

Select **Manual** to open the **PF** User Manual.

Release Notes

Select **Release Notes** to view a description of the latest features added to **PF**, the date when they were added and a reference to the chapter number where the additions can be found.

About

Select **About** for general information about **PF**.

Check for Updates

Select **Check for Updates** to manually update the program, user manual, tutorials, case studies and release notes. The following window appears:



Figure 12 Select files to download

Select the files you want to download and click **OK**.

The Main Toolbar

Only the following three buttons will be active on the Main Toolbar when entering the software:



Figure 13 The Main Toolbar



Create a New Project

Click this button to create a new project



Open Project

Click this button to open an already created **PF** project



Import File to new SFP

Click this button to import files into **PF** (see further instructions in chapter 13 in the User Manual)

Overview Pane

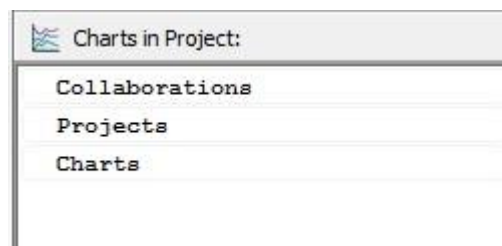


Figure 14 Overview Pane

The Overview Pane is divided into three subcategories:

Collaborations: Lists charts with combined signals from multiple projects.

Projects: Lists Single File Projects (SFP).

Charts: Lists charts in a project.

Making a New Single File Project (SFP)

Click the **Create a New Project** button and the following window appears:

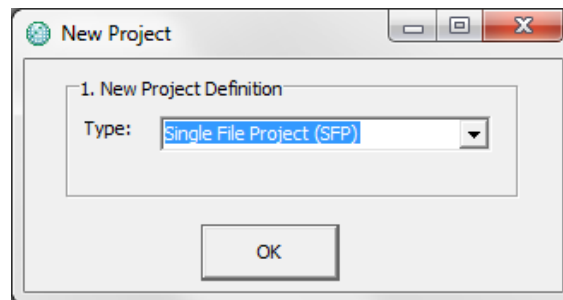


Figure 15 New Project

Select Single File Project. Note that you can also create a SFP by selecting **Project-SFP-New** (see figure 16).

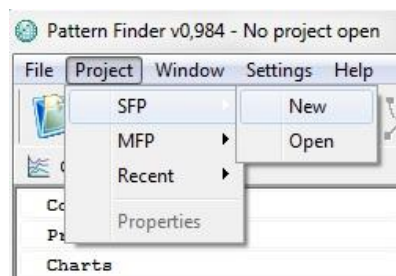


Figure 16 New SFP

Once SFP has been selected the following window appears:

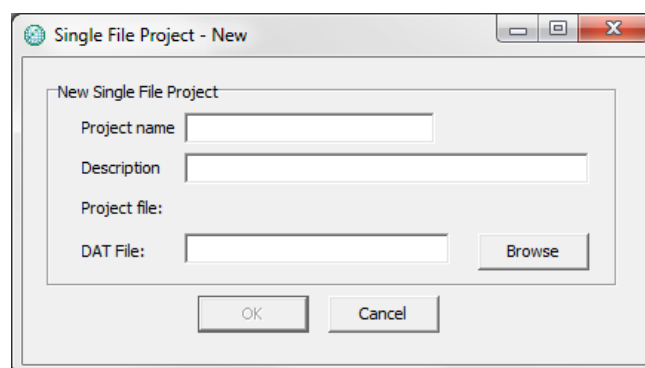


Figure 17 SFP

Click the browse button to select the DAT file. The default name of the project is the name of the DAT file. The user can change the name, for example, Project 1 and enter a short description of the project.

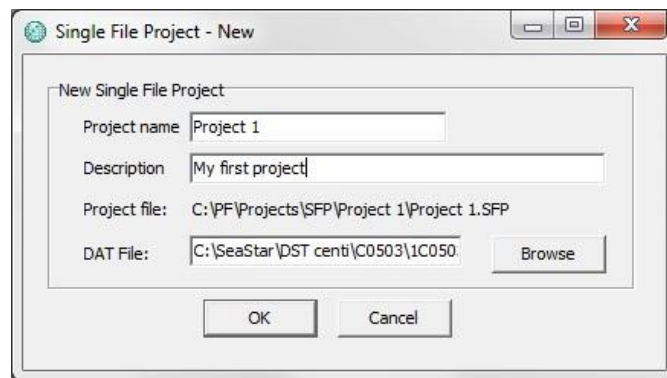


Figure 18 SFP

Click OK and the name of the project as well as its location appears on the **PF** header. In figure 19 you can see the project name in the Overview Pane under **Projects** and the **DAT** file under **Charts**.

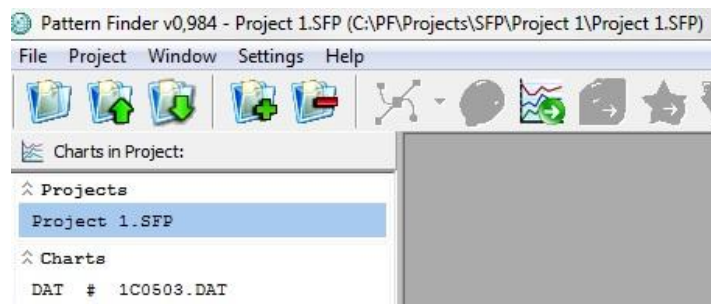


Figure 19 SFP

The project will be stored in the **PF** directory on your computer under **Projects-SFP**.

Aliasing

Because the DAT files usually have long and complicated names it can be useful to use an alias. This is done by right-clicking on the chart name you want to change (see figure 20). Note that you can also create an alias for Projects.

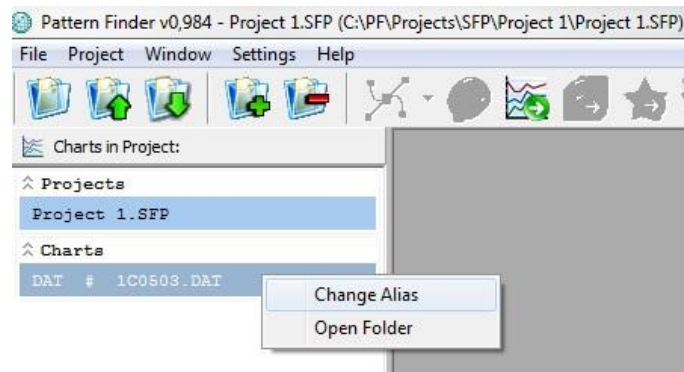


Figure 20 Create Alias

The window in figure 21 appears. Enter the alias you want to use.

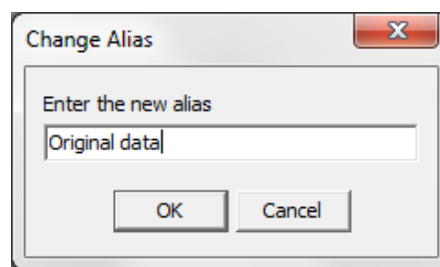


Figure 21 Change Alias

You can shift between the original name and the alias by selecting **Settings-Use Alias F12** (see figure 22) or simply by clicking F12 on the keyboard.

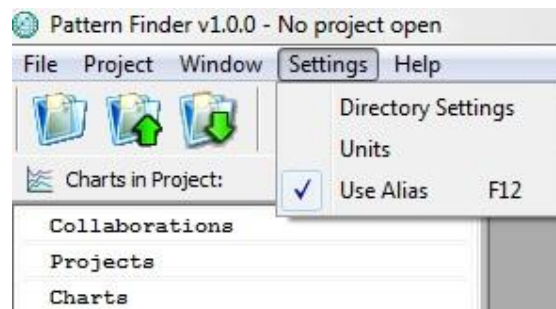


Figure 22 Use Alias

Project information Data

Select **Project-Properties** and the following window appears:

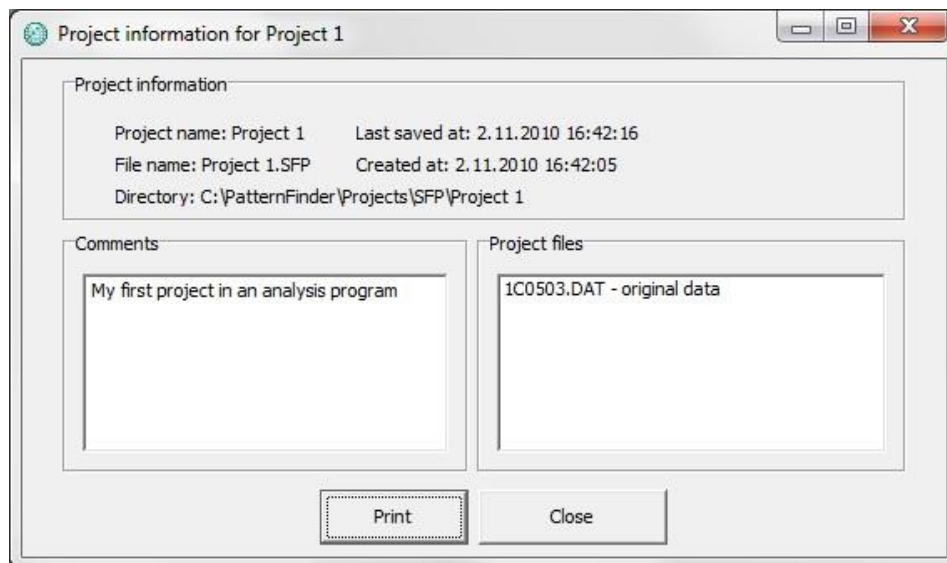


Figure 23 Project Information

In the window on the right side you can see the original name and alias of the project file. In the left window you can add comments about the project. To print out the information (see figure 24) select **Print**.

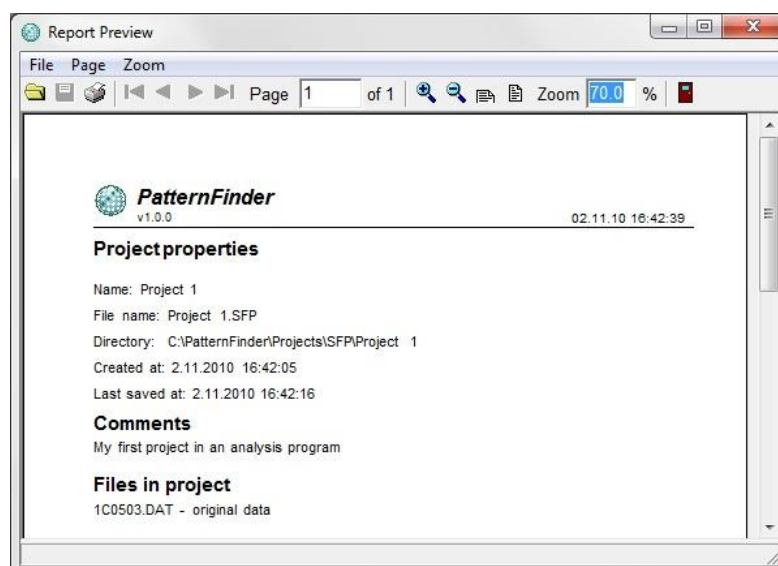


Figure 24 Print Preview

Select data for analysis

Double click on the DAT chart file in the Overview Pane

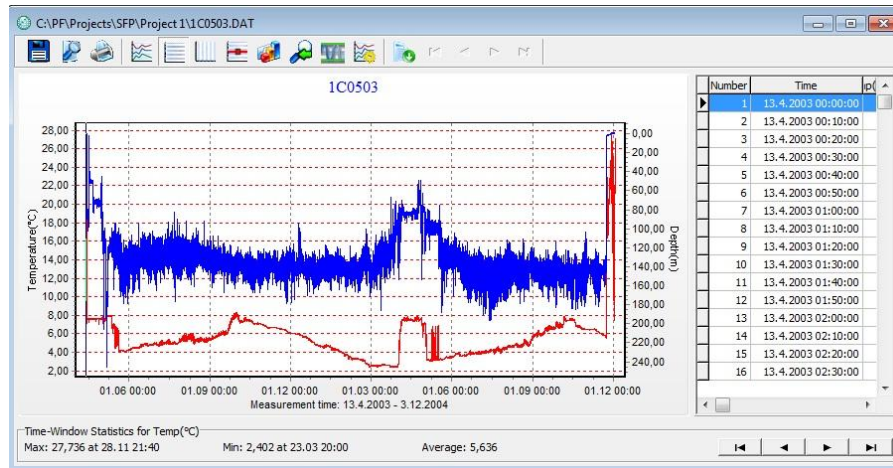


Figure 25 Chart

The original DAT file appears in graphic form (see figure 25).

To select series and data range click the **Select Signal to Signal Chart**

button  on the main toolbar and the following window appears:

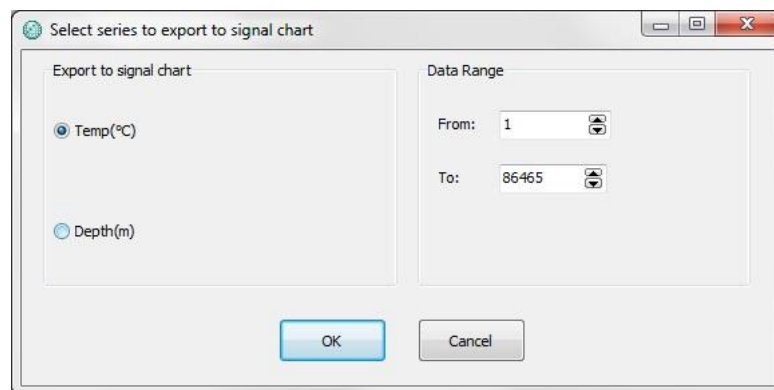


Figure 26 Select Signal to Signal Chart

Select the series and data range you want to use. In figure 28, depth and data range from measurement 205 to 84974 has been selected (see figure 27 and 28).

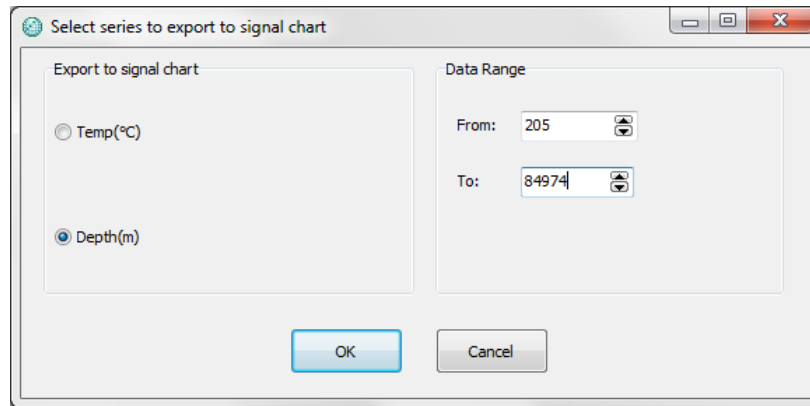


Figure 27 Select Signal to Signal Chart

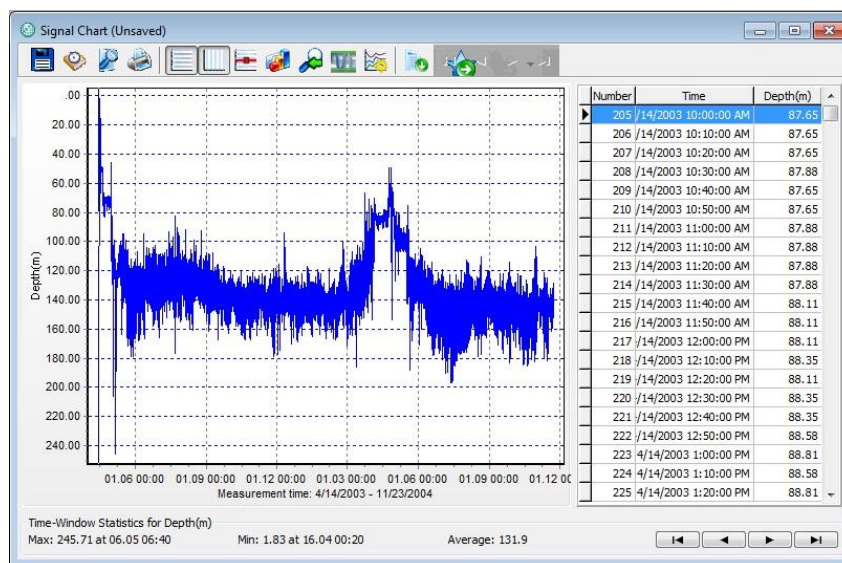


Figure 28 Signal Chart

Save and aliasing

To save the chart, click on the **Save Window Data** button  and the following window appears:

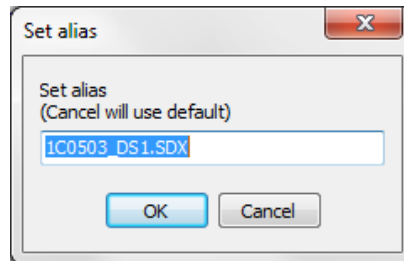



Figure 29 Set Alias

The default naming convention of **PF** is the DAT file name plus (in this case) “_DS1” which stand for depth signal 1 with the extension SDX (signal data extracted). You can give the signal an alias, for example, D1 for depth.

History

Select the **History** button  on the chart bar and the following window appears:

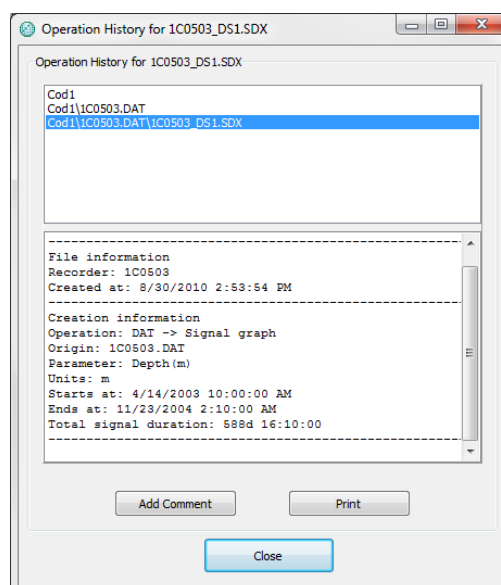


Figure 30 History

Information on the origin of the signal and the progress of the project can be viewed in the upper window. Information on each step is displayed below. You can add a comment to each step or the whole signal history.

Click **Print** to print out the information for each step.

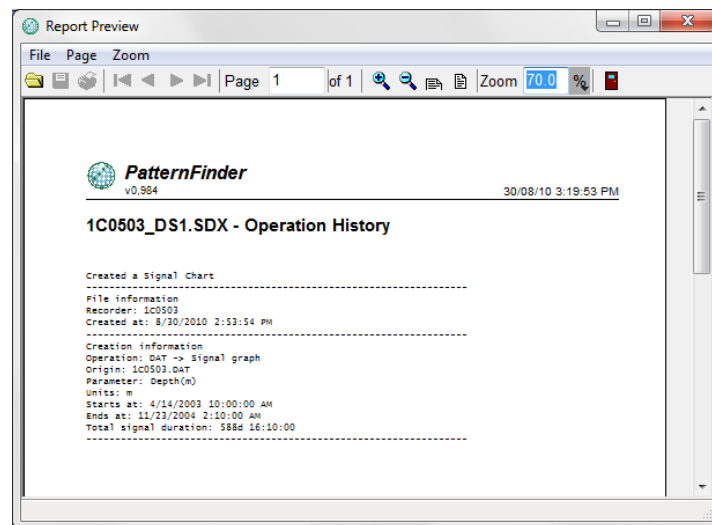


Figure 31 Print Preview

Adding Files to SFP

To add files to a SFP click the **Add Files to Project** button  and select the file you want to add.

Once the file has been added it is stored under **Charts** in the Overview Pane (see figure 32).

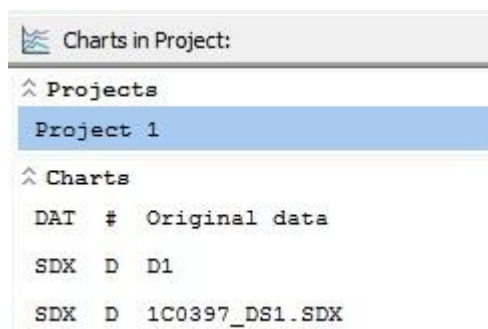



Figure 32 Add Files to SFP

Removing Files from SFP

To remove files from a SFP, highlight the file you want to remove in the Overview Pane and click the **Remove Files from Project** button. 

The following window appears:

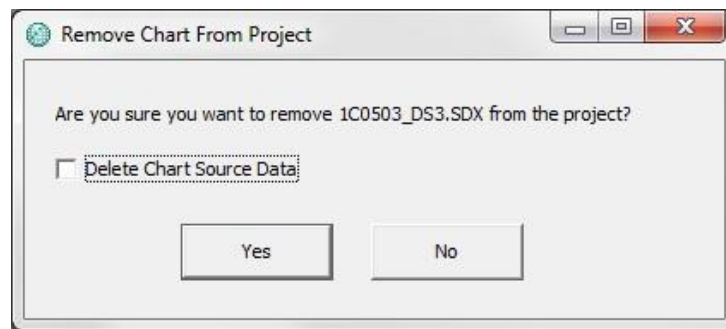


Figure 33 Remove Chart from Project

It is important to be careful when removing files from a project.

If you check the **Delete Chart Source Data** box, the file will be removed from the Overview Pane and the Project directory. If the file is not saved in another location it will be lost.

If you do not check the **Delete Chart Source Data** box, the file will only be removed from the Overview Pane, but will still be accessible in the Project directory.

Note that it is not possible to remove the original DAT file.